

# manual

MOUNTING – DISMOUNTING

ASSEMBLING – DISASSEMBLING  
INSTRUCTION

TECHNICAL  
INFORMATIONEN

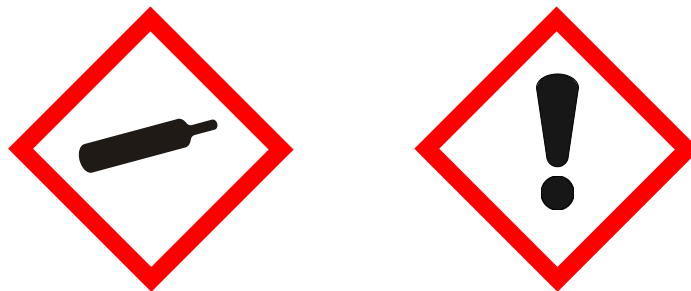
ET-ACS  
ET-GRS



## **SAFETY AND QUALITY**

### **Health and safety**

Incorrect assembly/installation may damage the keg spear and poses the risk that components may occasionally come off during initial pressurization and can cause harm to product and person.



### **Quality**

Specialised sealing systems made of high-grade materials are in daily utilisation with all our types of extractor tubes. Due to continuous improvement of our technology we are able to equip all A-type and G-type systems with a two-year warranty.

## **LIST OF CONTENTS**

1. Mounting Instruction
2. Dismounting Instruction
3. Disassembling Instruction
4. Assembling Instruction
5. Tool List
6. Technical Information
7. Connections

# MOUNTING INSTRUCTION

## EXTRACTOR TUBE ET-AC S / ET-GR S

### 1. Mounting Instruction

ET-AC S



ET-GR S



## MOUNTING INSTRUCTION

### EXTRACTOR TUBE ET-AC S / ET-GR S

Fig. 01



1. Moisten the extractor tube with water.

Fig. 02



2. Check the keg neck is clean. Clean the keg neck from any contaminations.

Fig. 03



3. Check the sealing ring is not damaged and is positioned correctly.

## MOUNTING INSTRUCTION

### EXTRACTOR TUBE ET-AC S / ET-GR S

Fig. 04



4. Check if lock/safety is O.K. Insert the Extractor Tube straight.

Fig. 05



5. Push the Extractor Tube in the Keg by hand.

Fig. 06



6. Tighten the extractor tube (rotate it clockwise) with the DSI screw-in/screw-out tool. The mounting torque (continuous) must be  $80 \pm 5$  Nm.

## MOUNTING INSTRUCTION

### EXTRACTOR TUBE ET-AC S / ET-GR S

Fig. 07



7. Remove the screw-in/screw-out tool. The keg is ready for use now.

## **DISMOUNTING INSTRUCTION**

### EXTRACTOR TUBE ET-AC S / ET-GR S

## 2. Dismounting Instruction

ET-AC S



ET-GR S





## DISMOUNTING INSTRUCTION

### EXTRACTOR TUBE ET-AC S / ET-GR S

Fig. 08



1. Decompress the keg e. g. by means of the DSI decompression tool.

Fig. 09



2. Unscrew the extractor tube (rotate it counter-clockwise) with the DSI screw-in/screw-out tool.

Fig. 10



3. Click the tool on the extractor tube by pushing it onto the rubber valve.

**ATTENTION PLEASE:** Do not press the handles!

## DISMOUNTING INSTRUCTION

### EXTRACTOR TUBE ET-AC S / ET-GR S

Fig. 11



4. Lift the tool with the locked extractor tube a little bit and rotate it clockwise to unlock the bayonet plate while holding the body.

Fig. 12



5. Push the tool down with one hand while holding the flange with the other hand.

Fig. 13



6. Tool is down on flange.

## DISMOUNTING INSTRUCTION

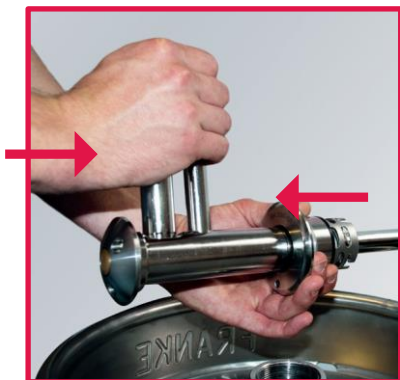
### EXTRACTOR TUBE ET-AC S / ET-GR S

Fig. 14



7. Lift the spear body upwards at the tool. Now the extractor tube can be taken out of the keg neck.

Fig. 15



8. Press the handles together to release the tool. The body is separated from the down tube. To complete disassembling go to page 14/15 and follow the instructions.

## DISASSEMBLING INSTRUCTION

### EXTRACTOR TUBE ET-AC S / ET-GR S

#### 3. Disassembling instruction

ET-AC S



ET-GR S



## DISASSEMBLING INSTRUCTION

### EXTRACTOR TUBE ET-AC S / ET-GR S

Fig. 16



1. Push down and hold the (de-)mounting haft with the two pins in the holes to relax the spring.

Fig. 17



2. Take out the safety latch by pulling it down.

Fig. 18



3. Take of the (de-)mounting tool.

## DISASSEMBLING INSTRUCTION

### EXTRACTOR TUBE ET-AC S / ET-GR S



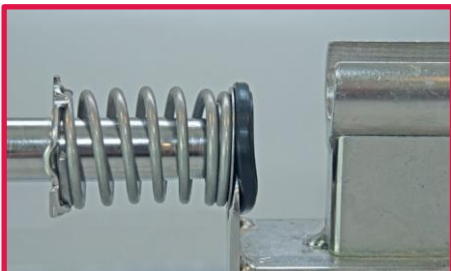
1. Push the handle of the DSI Tool backward. Place the extractor tube in the tool.



2. Push the handle forward to relax the spring.



3. Turn the body counter-clockwise and move it onto the ringnut. Push the handle backward to take the tube and the body out of the tool.



4. Remove the valve by pushing the fork (at the end of the tool) between the valve and the metal part and pulling it away from the tool.



5. Take off the remaining parts. The extractor tube is disassembled.

## ASSEMBLING INSTRUCTION

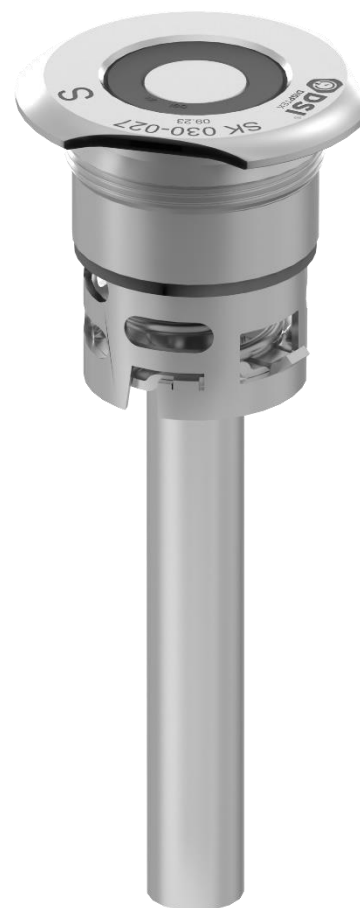
### EXTRACTOR TUBE ET-AC S / ET-GR S

#### 4. Assembling instruction

ET-AC S

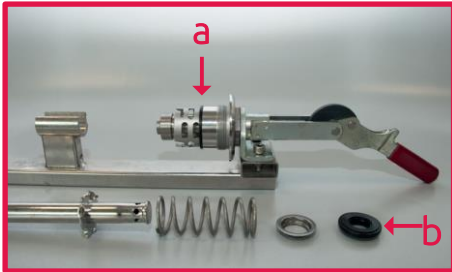


ET-GR S



## ASSEMBLING INSTRUCTION

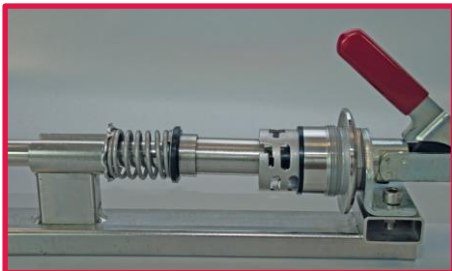
### EXTRACTOR TUBE ET-AC S / ET-GR S



1. Replace the sealing ring on the body (a) and the main seal (b). Put the body onto the ringnut and keep all the parts ready. Before assembling, moisten the rubber parts with Water.



2. Place all the pieces in the correct sequence on the tube. Put the extractor tube in the tool.



3. Centre the spring between the guides on the locking plate. Mount the valve on the tube by pushing the handle forward.



4. Move the body to the locking plate and turn it clockwise after the body is positioned in the lugs. Check if lock/safety is correct and if the countersinking from the safety latch is in the correct position.



5. Push the handle backward in order to tension the spring and take out the extractor tube. Please check the correct position of the seals. Now install the safety latch to complete extractor tube assembling (go to page 18 and follow the instructions).



## ASSEMBLING INSTRUCTION

### EXTRACTOR TUBE ET-AC S / ET-GR S

Fig. 19



1. Push down and hold the (de-)mounting haft with the two pins in the holes to relax the spring.

Fig. 20



2. Positioned the safety latch in the body with the flat side against the tube and the bended side pointing to the top of the body (Fig. 20 circle).

Fig. 21



3. Release (de-)mounting tool to tense the spring. If the spring is not properly positioned, push it by a pin of the tool on the counter-sinking from the safety latch (Fig. 21 lower arrow).

## TOOLS

### EXTRACTOR TUBE ET-AC S / ET-GR S

#### 5. Tool List

ET-AC S

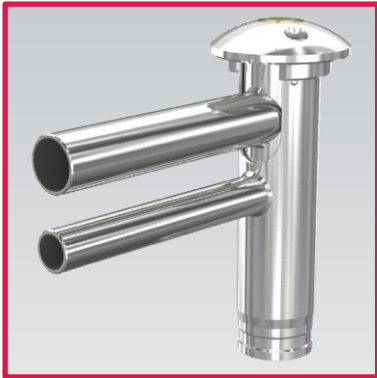


ET-GR S



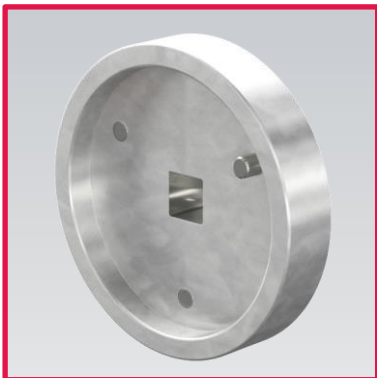
## TOOLS

### EXTRACTOR TUBE ET-AC S / ET-GR S



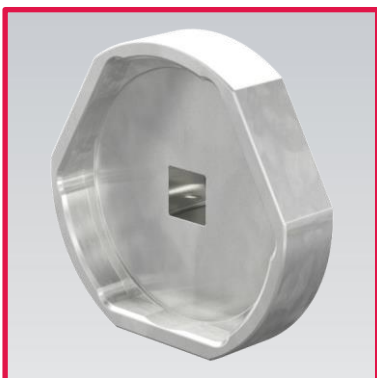
1. Removal tool

part number: 910550



2. Screw-in/screw-out tool:

part number: 550426.8



3. Screw-in/screw-out tool:

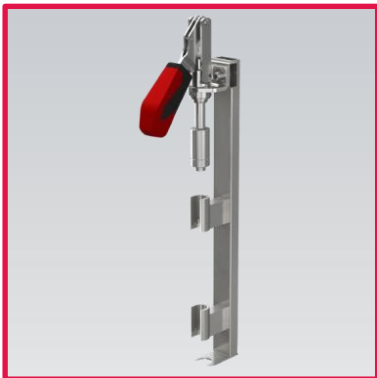
part number: 550425.7

## TOOLS

### EXTRACTOR TUBE ET-AC S / ET-GR S



4. Mounting/demounting haft for the safety latch:  
part number: 910712



5. Assembling/Disassembling tool:  
part number: 910555



5. Assembling tool:  
part number: 028250.2

## TOOLS

### EXTRACTOR TUBE ET-AC S / ET-GR S



7. Decompression tool:

ET-AC S: part number: 811225



8. Decompression tool:

ET-GR S: part number: 811226

# TECHNICAL INFORMATION

## EXTRACTOR TUBE ET-AC S / ET-GR S

### 6. Technical Information

ET-ACS



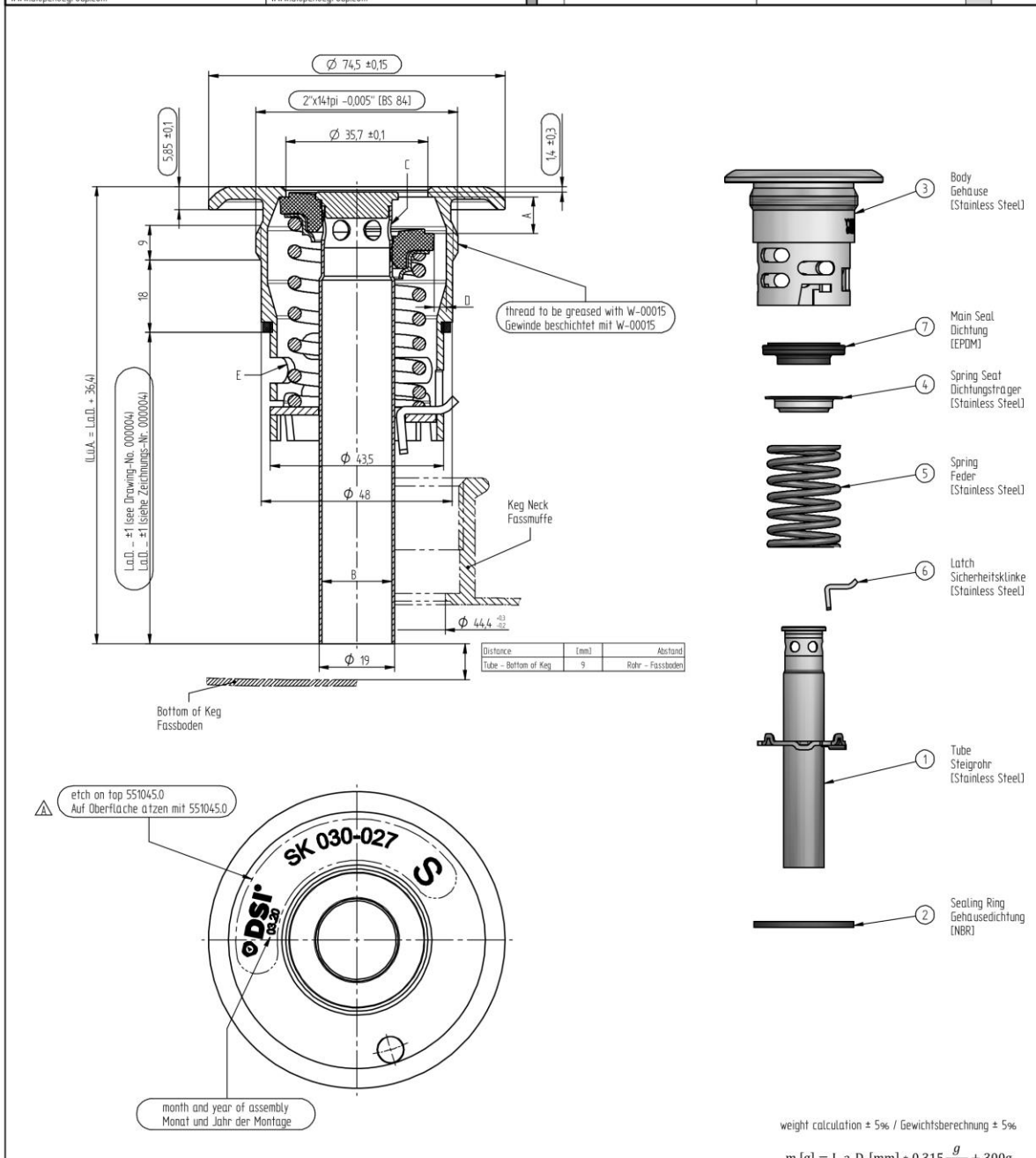
ET-GR S



# TECHNICAL INFORMATION

## EXTRACTOR TUBE ET-AC S

EN	DE	EN	DE		
Product Information	Produktinformationen	Stroke and Passages	Hub und Öffnungsquerschnitte		
according to DIN 6650, DIN 3542 and FDA regulations	Produkt nach DIN 6650, DIN 3542 und FDA Bestimmungen	I main seal part 7 - part 3	Dichtung Pos. 7 - Pos. 3	A	9 - 12 mm
for specific length calculation keg drawing or H3-dimension is needed according to DIN 6647	Für konkrete Längenberechnung wird die Keg-Zeichnung oder das H3-Maß nach DIN 6647 benötigt	II through inner tube $\phi$ 17,6 part 1	innerhalb des Steigrohres $\phi$ 17,6 Pos. 1	B	240 mm <sup>2</sup>
gastight	gasdicht	6 holes in part 1	6 Löcher in Pos. 1	C	120 mm <sup>2</sup>
mounting torque: 80±5 Nm	Anzugsdrehmoment: 80±5 Nm	III through outer tube part 3 - part 7	außerhalb des Steigrohres Pos. 3 - Pos. 7	D	470 mm <sup>2</sup>
temperature resistance short-time 160°C	Temperaturbeständigkeit kurzfristig 160°C	in part 3	in Pos. 3	E	980 mm <sup>2</sup>
for more information www.dispensegroup.com	für mehr Informationen www.dispensegroup.com				



Pos.	Quantity	Art.-No.	Title
1	1	000002	Master Down Tube Assembly (loose Safety)
2	1	025130.6	Sealing Ring
3	1	028092.9	Body AC 2"x14tpi
4	1	551082.4	Spring Seat
5	1	551083.5	Spring
6	1	552468.4	Safety Latch
7	1	610116	Main Seal. 160°C saturated steam

PRODUCT	TOLERANCES	LAST CHANGE	SCALE: 1:1 (1:25)	WEIGHT
	1st 0.125 (0.005)	1		VOLUME
	2nd 0.050 (0.002)			
	3rd 0.025 (0.001)			
	4th 0.010 (0.0005)			
	5th 0.005 (0.0002)			
	6th 0.002 (0.0001)			
	7th 0.001 (0.00005)			
	8th 0.0005 (0.00002)			
	9th 0.0002 (0.00001)			
	10th 0.0001 (0.000005)			
	11th 0.00005 (0.000002)			
	12th 0.00002 (0.000001)			
	13th 0.00001 (0.0000005)			
	14th 0.000005 (0.0000002)			
	15th 0.000002 (0.0000001)			
	16th 0.000001 (0.00000005)			
	17th 0.0000005 (0.00000002)			
	18th 0.0000002 (0.00000001)			
	19th 0.0000001 (0.000000005)			
	20th 0.00000005 (0.000000002)			
	21st 0.00000002 (0.000000001)			
	22nd 0.00000001 (0.0000000005)			
	23rd 0.000000005 (0.0000000002)			
	24th 0.000000002 (0.0000000001)			
	25th 0.000000001 (0.00000000005)			
	26th 0.0000000005 (0.00000000002)			
	27th 0.0000000002 (0.00000000001)			
	28th 0.0000000001 (0.000000000005)			
	29th 0.00000000005 (0.000000000002)			
	30th 0.00000000002 (0.000000000001)			
	31st 0.00000000001 (0.0000000000005)			
	32nd 0.000000000005 (0.0000000000002)			
	33rd 0.000000000002 (0.0000000000001)			
	34th 0.000000000001 (0.00000000000005)			
	35th 0.0000000000005 (0.00000000000002)			
	36th 0.0000000000002 (0.00000000000001)			
	37th 0.0000000000001 (0.000000000000005)			
	38th 0.00000000000005 (0.000000000000002)			
	39th 0.00000000000002 (0.000000000000001)			
	40th 0.00000000000001 (0.0000000000000005)			
	41st 0.000000000000005 (0.0000000000000002)			
	42nd 0.000000000000002 (0.0000000000000001)			
	43rd 0.000000000000001 (0.00000000000000005)			
	44th 0.0000000000000005 (0.00000000000000002)			
	45th 0.0000000000000002 (0.00000000000000001)			
	46th 0.0000000000000001 (0.000000000000000005)			
	47th 0.00000000000000005 (0.000000000000000002)			
	48th 0.00000000000000002 (0.000000000000000001)			
	49th 0.00000000000000001 (0.0000000000000000005)			
	50th 0.000000000000000005 (0.0000000000000000002)			
	51st 0.000000000000000002 (0.0000000000000000001)			
	52nd 0.000000000000000001 (0.00000000000000000005)			
	53rd 0.0000000000000000005 (0.00000000000000000002)			
	54th 0.0000000000000000002 (0.00000000000000000001)			
	55th 0.0000000000000000001 (0.000000000000000000005)			
	56th 0.00000000000000000005 (0.000000000000000000002)			
	57th 0.00000000000000000002 (0.000000000000000000001)			
	58th 0.00000000000000000001 (0.0000000000000000000005)			
	59th 0.000000000000000000005 (0.0000000000000000000002)			
	60th 0.000000000000000000002 (0.0000000000000000000001)			
	61st 0.000000000000000000001 (0.00000000000000000000005)			
	62nd 0.0000000000000000000005 (0.00000000000000000000002)			
	63rd 0.0000000000000000000002 (0.00000000000000000000001)			
	64th 0.0000000000000000000001 (0.000000000000000000000005)			
	65th 0.00000000000000000000005 (0.000000000000000000000002)			
	66th 0.00000000000000000000002 (0.000000000000000000000001)			
	67th 0.00000000000000000000001 (0.0000000000000000000000005)			
	68th 0.000000000000000000000005 (0.0000000000000000000000002)			
	69th 0.000000000000000000000002 (0.0000000000000000000000001)			
	70th 0.000000000000000000000001 (0.00000000000000000000000005)			
	71st 0.0000000000000000000000005 (0.00000000000000000000000002)			
	72nd 0.0000000000000000000000002 (0.00000000000000000000000001)			
	73rd 0.0000000000000000000000001 (0.000000000000000000000000005)			
	74th 0.00000000000000000000000005 (0.000000000000000000000000002)			
	75th 0.00000000000000000000000002 (0.000000000000000000000000001)			
	76th 0.00000000000000000000000001 (0.0000000000000000000000000005)			
	77th 0.000000000000000000000000005 (0.0000000000000000000000000002)			
	78th 0.000000000000000000000000002 (0.0000000000000000000000000001)			
	79th 0.000000000000000000000000001 (0.00000000000000000000000000005)			
	80th 0.0000000000000000000000000005 (0.00000000000000000000000000002)			
	81st 0.0000000000000000000000000002 (0.00000000000000000000000000001)			
	82nd 0.0000000000000000000000000001 (0.000000000000000000000000000005)			
	83rd 0.00000000000000000000000000005 (0.000000000000000000000000000002)			
	84th 0.00000000000000000000000000002 (0.000000000000000000000000000001)			
	85th 0.00000000000000000000000000001 (0.0000000000000000000000000000005)			
	86th 0.000000000000000000000000000005 (0.0000000000000000000000000000002)			
	87th 0.000000000000000000000000000002 (0.0000000000000000000000000000001)			
	88th 0.000000000000000000000000000001 (0.00000000000000000000000000000005)			
	89th 0.0000000000000000000000000000005 (0.00000000000000000000000000000002)			
	90th 0.0000000000000000000000000000002 (0.00000000000000000000000000000001)			
	91st 0.0000000000000000000000000000001 (0.000000000000000000000000000000005)			
	92nd 0.00000000000000000000000000000005 (0.000000000000000000000000000000002)			
	93rd 0.00000000000000000000000000000002 (0.000000000000000000000000000000001)			
	94th 0.00000000000000000000000000000001 (0.0000000000000000000000000000000005)			
	95th 0.000000000000000000000000000000005 (0.0000000000000000000000000000000002)			
	96th 0.000000000000000000000000000000002 (0.0000000000000000000000000000000001)			
	97th 0.000000000000000000000000000000001 (0.00000000000000000000000000000000005)			
	98th 0.0000000000000000000000000000000005 (0.00000000000000000000000000000000002)			
	99th 0.0000000000000000000000000000000002 (0.00000000000000000000000000000000001)			
	100th 0.0000000000000000000000000000000001 (0.000000000000000000000000000000000005)			

weight calculation ± 5% / Gewichtsrechnung ± 5%

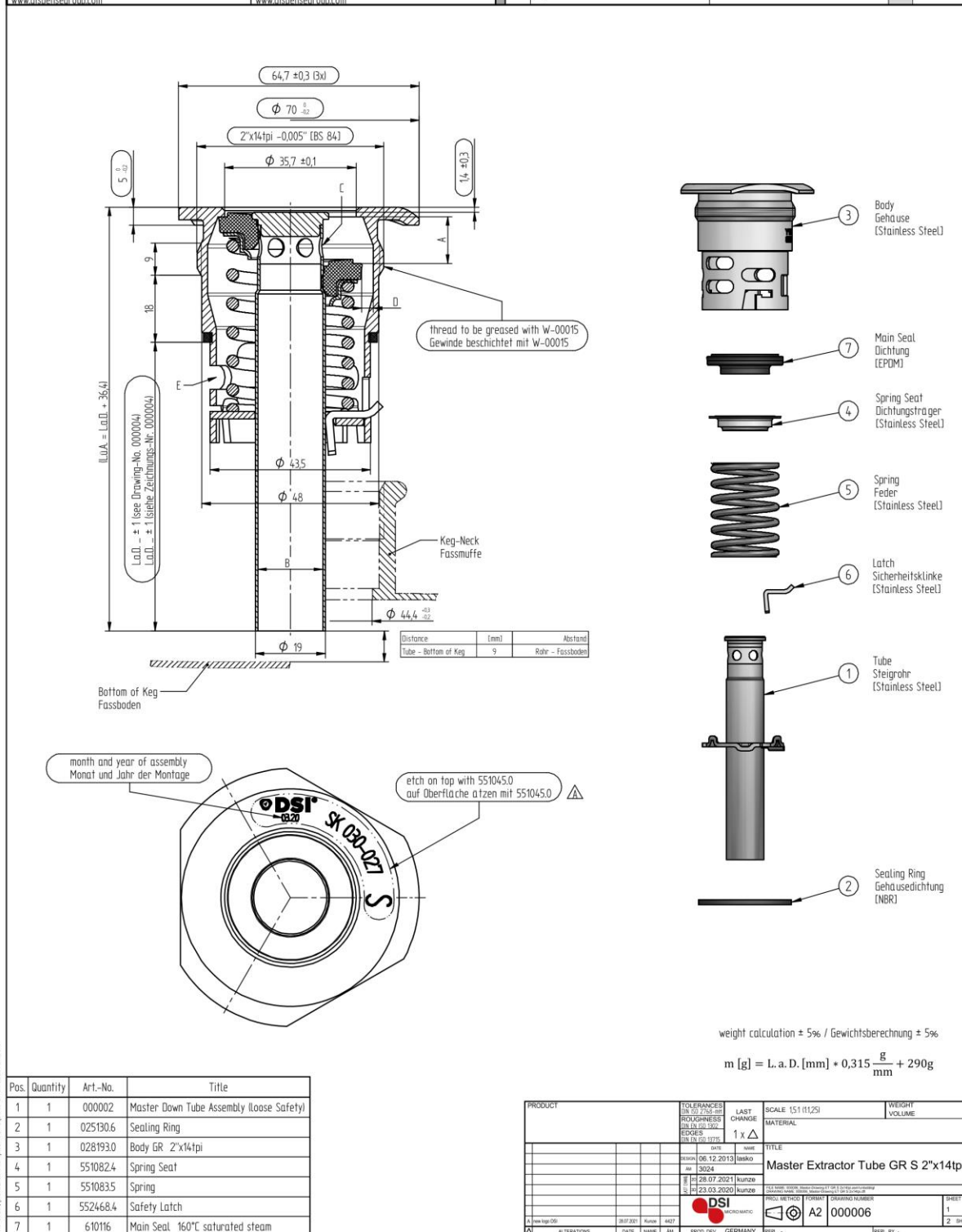
$$m [g] = L. a. D. [mm] * 0,315 \frac{g}{mm} + 300g$$

This drawing is the property of Dispense Systems International. The information on it is confidential and must not be copied for any other purpose without the prior written permission of DSI. In case of doubt, please ask. Samples are required after each revision.

# TECHNICAL INFORMATION

## EXTRACTOR TUBE ET-GR S

EN	DE	EN	DE
<b>Product Information</b>	<b>Produktinformationen</b>	<b>Stroke and Passages</b>	<b>Hub und Öffnungsquerschnitte</b>
according to DIN 6650, DIN 3542 and FDA regulations	Produkt nach DIN 6650, DIN 3542 und FDA-Bestimmungen	I main seal part 7 – part 3	Dichtung Pos. 7 – Pos. 3
for specific length calculation keg drawing or H3-dimension is needed according to DIN 6647	Für konkrete Längenberechnung wird die Keg-Zeichnung oder das H3-Maß nach DIN 6647 benötigt.	II through inner tube $\Phi 17,6$ part 1	innerhalb des Steigrohres $\Phi 17,6$ Pos. 1
gastight	gasdicht	III 6 holes in part 1	6 Löcher in Pos. 1
mounting torque: $80 \pm 5$ Nm	Anzugsdrehmoment: $80 \pm 5$ Nm	through outer tube part 3 – part 7	auf/serhalb des Steigrohres Pos. 3 – Pos. 7
temperature resistance short-time $160^\circ\text{C}$	Temperaturbeständigkeit kurzfristig $160^\circ\text{C}$	in part 3	in Pos. 3
for more information <a href="http://www.dispensegroup.com">www.dispensegroup.com</a>	für mehr Informationen <a href="http://www.dispensegroup.com">www.dispensegroup.com</a>		



This drawing is the property of Dispense Systems International. The information on it is confidential and must not be copied for any other purpose without the prior written permission of DSI. All rights reserved. In case of doubt, please ask. Samples are required after each revision.



## CONNECTIONS

### EXTRACTOR TUBE ET-ACS / ET-GR S

#### 7. Connections

ET-ACS

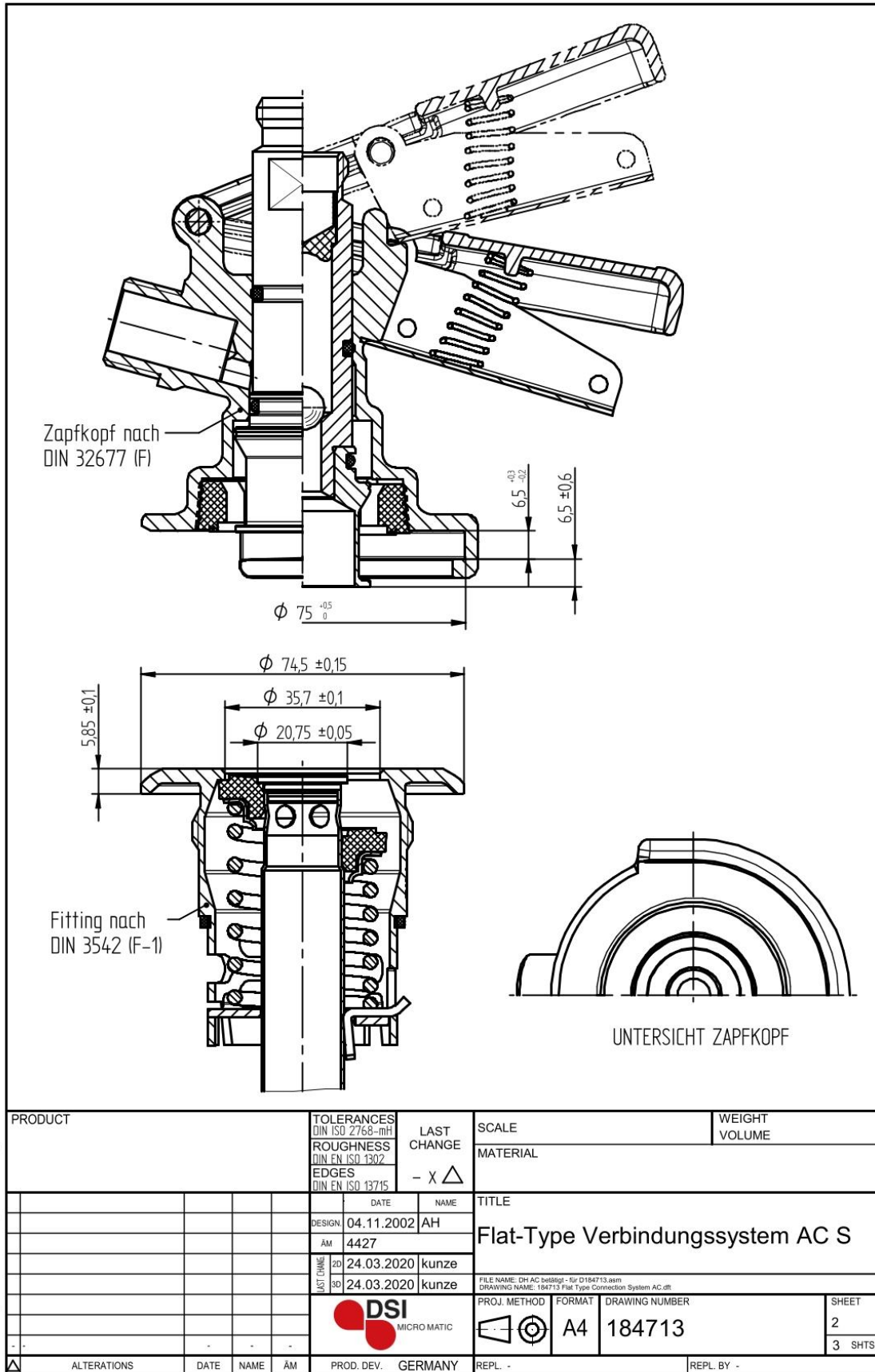


ET-GR S



# CONNECTIONS

## EXTRACTOR TUBE ET-AC S

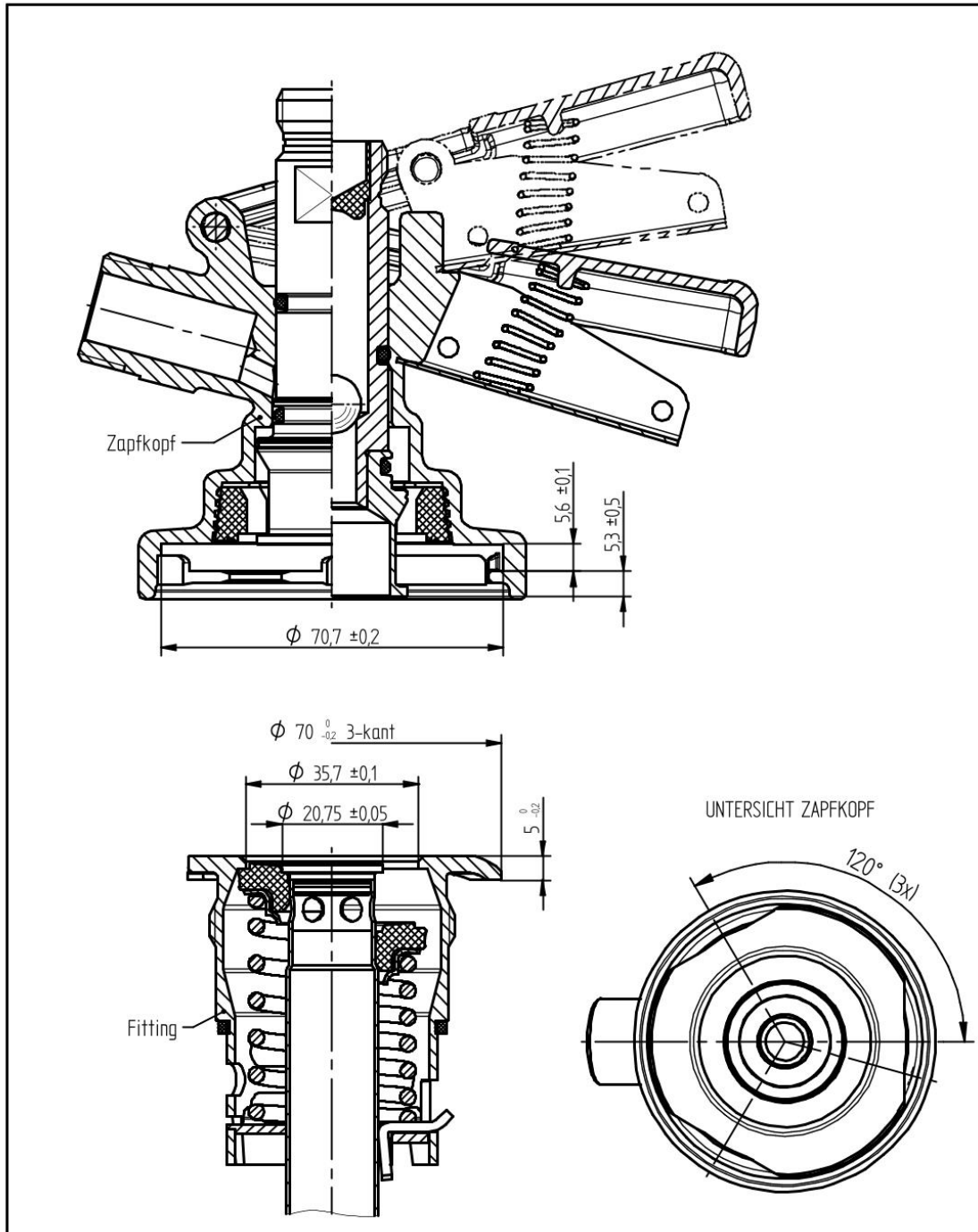


This drawing is the property of Dispense Systems International. The information on it is confidential, and must not be copied for any other purpose without the prior written permission of DSI Getränkearmaturen GmbH. If in doubt, please ask. Samples are required after each revision.

PRODUCT		TOLERANCES DIN ISO 2768-mH		LAST CHANGE		SCALE		WEIGHT VOLUME	
		ROUGHNESS DIN EN ISO 1302		- X $\Delta$		MATERIAL			
		EDGES DIN EN ISO 13715		DATE		TITLE			
				DESIGN 04.11.2002 AH		Flat-Type Verbindungssystem AC S			
				AM 4427		FILE NAME: D:\AC\8688\dtg - für D184713.dsm			
				2D 24.03.2020 kunze		DRAWING NAME: 184713 Flat-Type Connection System AC.dwg			
				3D 24.03.2020 kunze		PROJ. METHOD		SHEET	
								2	
				PROD. DEV. GERMANY		FORMAT A4		DRAWING NUMBER 184713	
				REPL. -		REPL. BY -		3 SHTS.	
ALTERATIONS		DATE		NAME		ÄM			

# CONNECTIONS

## EXTRACTOR TUBE ET-GR S



This drawing is the property of Dispense Systems International. The information on it is confidential, and must not be copied for any other purpose without the prior written permission of DSI Getränkearmaturen GmbH. If in doubt, please ask. Samples are required after each revision.

PRODUCT		TOLERANCES DIN ISO 2768-mH		LAST CHANGE		SCALE		WEIGHT VOLUME	
		ROUGHNESS DIN EN ISO 1302		- X $\Delta$		MATERIAL			
		EDGES DIN EN ISO 13715		DATE		TITLE			
				DESIGN 05.11.2002 AH		Flat-Type Verbindungssystem GR S			
				AM 4427					
				2D 26.03.2020 kunze		FILE NAME: ET GR S (etl)grg - 1dr 184715.asm			
				3D 26.03.2020 kunze		DRAWING NAME: 184715 Flat Type Connection System GR.dft			
						PROJ. METHOD		SHEET	
						A4		184715	
				PROD. DEV. GERMANY		DRAWING NUMBER		3 SHTS.	
ALTERATIONS		DATE		NAME		REPL. BY			

## **DSI Micro Matic GmbH**

Oberster Kamp 20  
59069 Hamm  
Germany  
Telefon: +49 (0) 23 85 772 100  
Fax: +49 (0) 23 85 772 249  
dsi-sales@micro-matic.com  
dsi.micro-matic.com

## **DSI SERVICE – TEAM**

### **SALES AND CUSTOMER SERVICE:**

Iryna Matyak  
Eastern Europe, UK & Ireland  
Telefon: +49 (0) 23 85 772 216  
E-Mail: iryna.matyak@micro-matic.com

Debora Salvador  
Western Europe & North-/ South-America  
Telefon: +49 (0) 23 85 772 212  
E-Mail: debora.salvador@micro-matic.com

Katja Spanke  
Western Europe, Australia & Asia  
Telefon: +49 (0) 23 85 772 215  
E-Mail: katja.spanke@micro-matic.com

### **SALES FIELD SERVICE:**

Rafael Kurzawa  
D.A.CH.  
Telefon: +49 2385 772 218  
Mobil: +49 162 2892386  
E-Mail: rafael.kurzawa@micro-matic.com