

manual

MOUNTING – DISMOUNTING

ASSEMBLING – DISASSEMBLING
INSTRUCTION

TECHNICAL INFORMATION

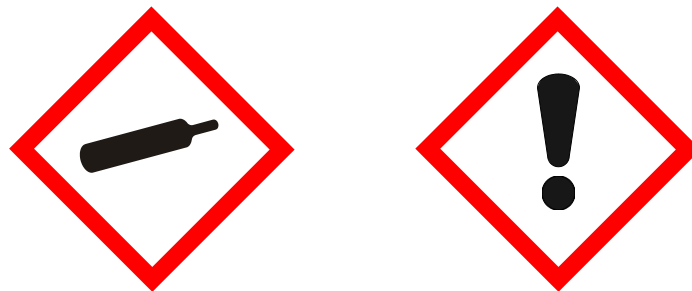
ET-C SI



SAFETY AND QUALITY

Health and safety

Incorrect assembly/installation may damage the keg spear and poses the risk that components may occasionally come off during initial pressurization and can cause harm to product and person.



Quality

Specialised sealing systems made of high-grade materials are in daily utilisation with all our types of extractor tubes. Due to continuous improvement of our technology, we are able to equip all A-type and G-type systems with a two-year warranty.

LIST OF CONTENTS

1. Mounting Instruction
2. Dismounting Instruction
3. Disassembling Instruction
4. Assembling Instruction
5. Tool List
6. Technical Information
7. Connections

MOUNTING INSTRUCTION

EXTRACTOR TUBE ET-C SI

1. Mounting Instruction

ET-C SI



MOUNTING INSTRUCTION

EXTRACTOR TUBE ET-C SI

Fig. 01



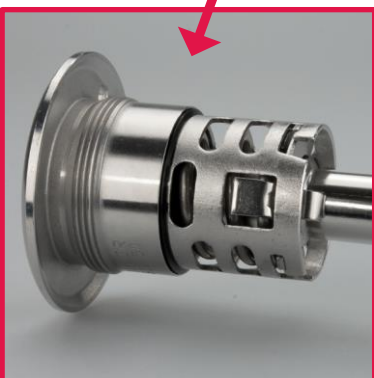
1. Moisten the extractor tube with water.

Fig. 02



2. Check the keg neck is clean. Clean the keg neck from any contaminations.

Fig. 03



3. Check the sealing ring is not damaged and is positioned correctly.

MOUNTING INSTRUCTION

EXTRACTOR TUBE ET-C SI

Fig. 04



4. Check if lock/safety is O.K. Insert the Extractor Tube straight.

Fig. 05



5. Push in the spear by hand. The safety latch will recess and click back after it has passed the keg neck.

Fig. 06



6. Tighten the extractor tube (rotate it clockwise) e.g. with the DSI screw-in/screw-out tool and torque-wrench. The mounting torque (continuous) must be 80 ± 5 Nm.

MOUNTING INSTRUCTION

EXTRACTOR TUBE ET-C SI

Fig. 07



7. Remove the screw-in/screw-out tool. The
keg is ready for use now.

DISMOUNTING INSTRUCTION

EXTRACTOR TUBE ET-C SI

2. Dismounting Instruction

ET-C SI



DISMOUNTING INSTRUCTION

EXTRACTOR TUBE ET-C SI

Fig. 08



1. Decompress the keg, e.g. by means of the DSI decompression and removal Tool.

Fig. 09



2. Unscrew the extractor tube (rotate it counter-clockwise) with the DSI screw-in/screw-out tool.

Fig. 10



3. Connect the Removal Tool like a normal dispense head and press down the handle till it clicks. The safety latch will recess.

DISMOUNTING INSTRUCTION

EXTRACTOR TUBE ET-C SI

Fig. 11



4. Take out the spear and disconnect the removal tool.

DISMOUNTING INSTRUCTION

EXTRACTOR TUBE ET-C SI

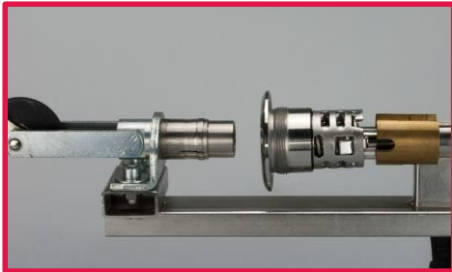
3. Disassembling instruction

ET-C SI

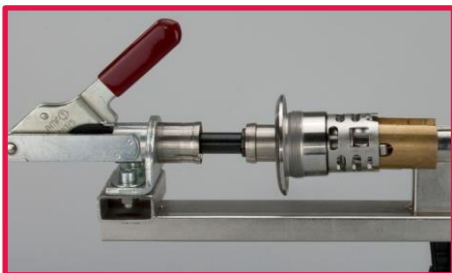


DISMOUNTING INSTRUCTION

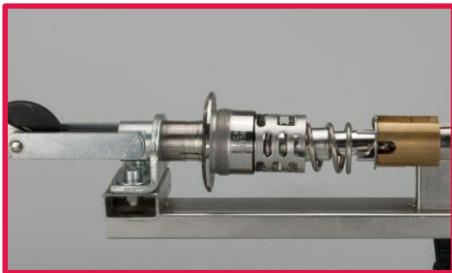
EXTRACTOR TUBE ET-C SI



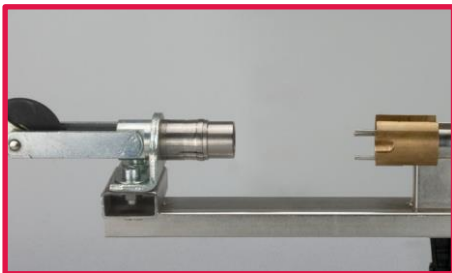
1. Put the extractor tube in the tool. Make sure that the three pins of the tool fit into the three holes in the bottom of the extractor tube.



2. Pull the handle forward to compress the spring. Push the safety latch slightly inwards. Pull the body downward and turn it anti-clockwise until it is unlocked.



3. Move the body upwards and connect it to the tool by turning the body 90°.



4. Push the handle backward. Take the subassembly out. Take the body off.



5. Take off the remaining parts. The extractor tube is disassembled.

ASSEMBLING INSTRUCTION

EXTRACTOR TUBE ET-C SI

4. Assembling instruction

ET-C SI

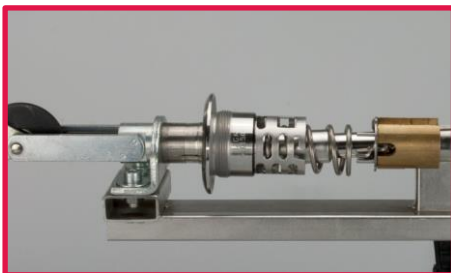


ASSEMBLING INSTRUCTION

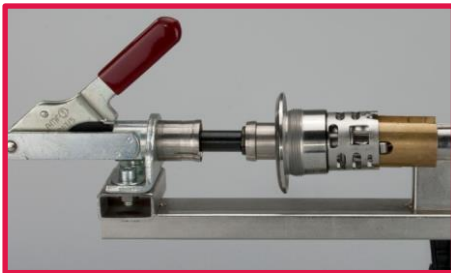
EXTRACTOR TUBE ET-C SI



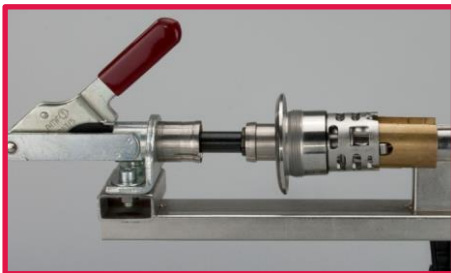
1. Replace the sealing ring on the body and the main seal. Assemble all parts.



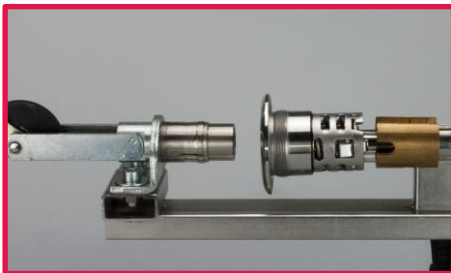
2. Connect the body to the Assembling Tool. Put the subassembly in the Tool. Push the safety latch slightly inwards.



3. Pull the handle forward to compress the spring.



4. Pull the body downwards and turn it clockwise until it is locked to the Extractor Tube Plate. Make sure that the safety latch sticks through the big opening in the body.



5. Push the handle backward in order to tension the spring and take out the extractor tube. Please check the correct positions of the seals and the safety latch.

TOOLS

EXTRACTOR TUBE ET-C SI

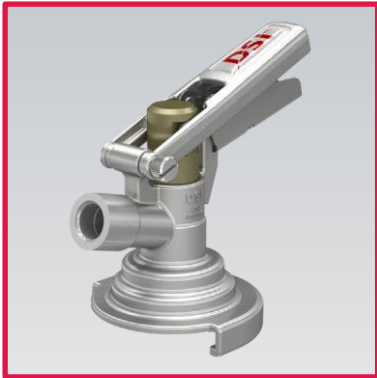
5. Tool List

ET-C SI



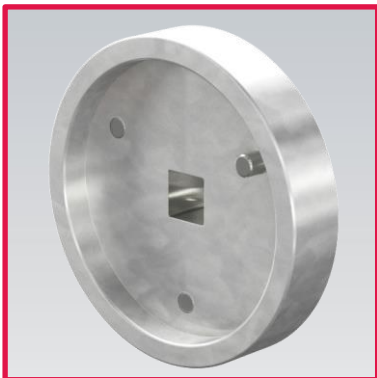
TOOLS

EXTRACTOR TUBE ET-C SI



1. Removal- and decompression tool:

part number: 550439.1



2. Screw-in/screw-out tool:

part number: 550426.8

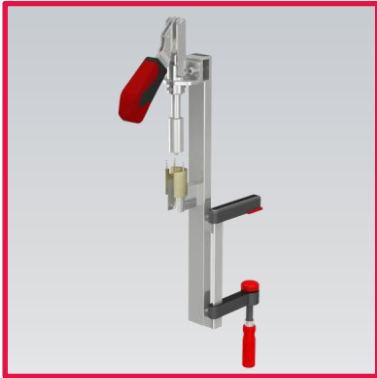


3. Disassembling tool CO₂ gasket:

part number: 910611

TOOLS

EXTRACTOR TUBE ET-C SI



4. Assembling/Disassembling tool:

part number: 910554



5. Assembling tool:

part number: 611899

TECHNICAL INFORMATION

EXTRACTOR TUBE ET-C SI

6. Technical Information

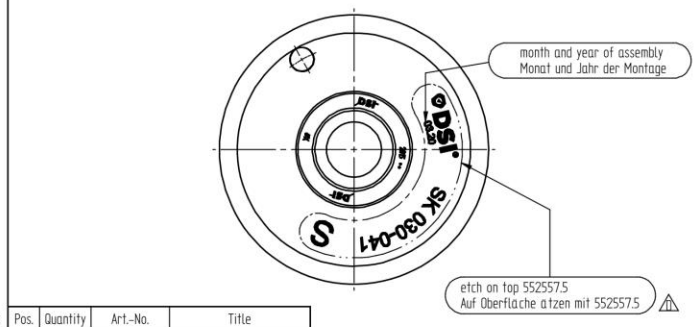
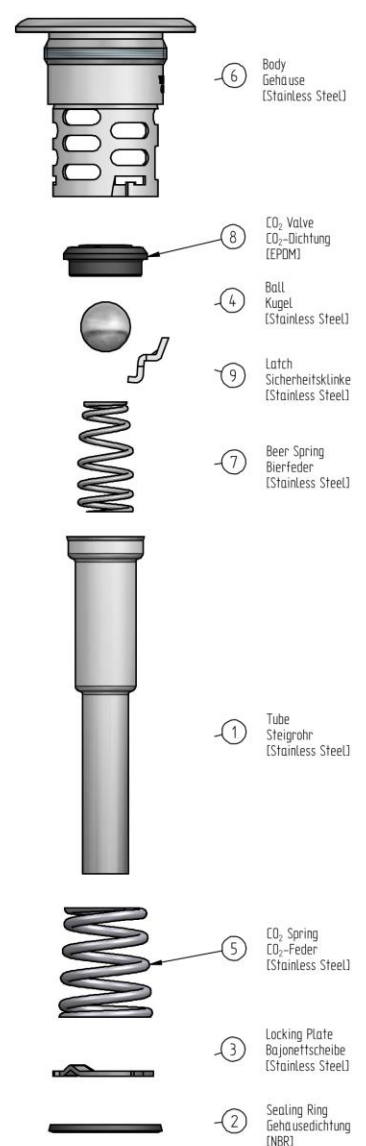
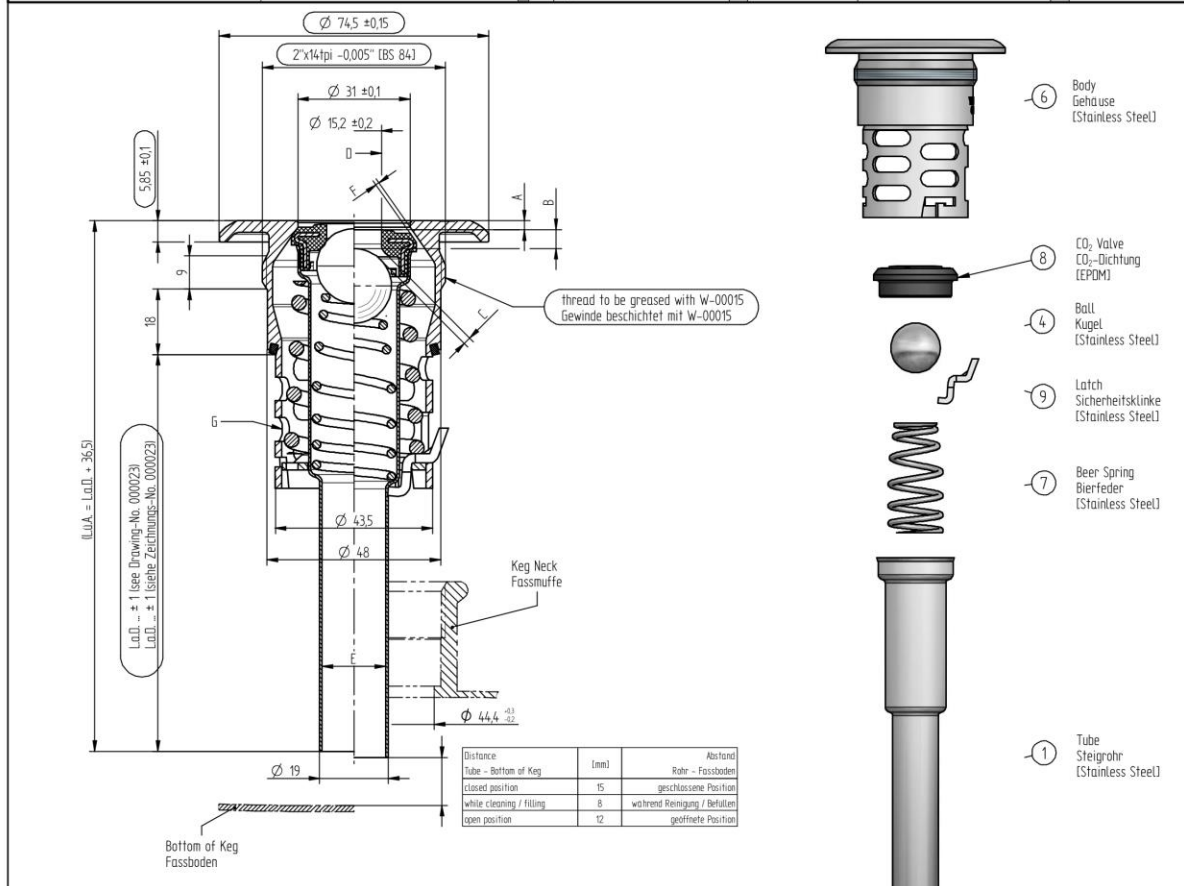
ET-C SI



TECHNICAL INFORMATION

EXTRACTOR TUBE ET-C SI

EN	DE	EN	DE
Product Information	Produktinformationen	Stroke and Passages	Hub und Öffnungsquerschnitte
according to DIN 6650, DIN 3542 and FDA regulations	Produkt nach DIN 6650, DIN 3542 und FDA Bestimmungen	CO ₂ valve + tube part 8 + part 1 – part 6	CO ₂ -Dichtung + Steigrohr Pos. 8 + Pos. 1 – Pos. 6
gaslight	gasdicht	ball part 4 – part 8	Kugel Pos. 4 – Pos. 8
for specific length calculation keg drawing or H3-dimension is needed according to DIN 6647	Für konkrete Längenberechnung wird die Keg-Zeichnung oder das H3-Maß nach DIN 6647 benötigt	inside the seal part 8 – part 4	innerhalb der Dichtung Pos. 8 – Pos. 4
mounting torque: 80±5 Nm	Anzugsdrehmoment: 80±5 Nm	inside the seal part 8	innerhalb der Dichtung Pos. 8
temperature resistance short-time 135°C	Temperaturbeständigkeit kurzfristig 135°C	through inner tube Ø17,6 part 1	innerhalb des Steigrohres Ø17,6 Pos. 1
for more information www.dispensegroup.com	für mehr Informationen www.dispensegroup.com	through outer tube part 6 – part 8	außerhalb des Steigrohres Pos. 6 – Pos. 8
		in part 6	in Pos. 6



Pos.	Quantity	Art.-No.	Title
1	1	000022	Master Down Tube C
2	1	026363.7	Sealing Ring
3	1	026367.0	Lacking Plate
4	1	026703.6	Ball
5	1	553045.9	Spring
6	1	610150	Body C 2"x14tpi
7	1	610670	Valve Spring
8	1	611020	CO2 Valve
9	1	611070	Safety Latch, flat

weight calculation ± 5% / Gewichtsrechnung ± 5%

$$m [g] = (L.a.D. [mm] - 40) \cdot 0,315 \frac{g}{mm} + 410g$$

PRODUCT	TOLERANCES	LAST CHANGE	SCALE	WEIGHT
	FIN. (2) ROUGHERNESS (3) HOLDING (4) SERIES (5) FIN. (6)	DATE BY	1:1 (1:25)	VOLUME
		28.01.2015 msk		
		28.07.2021 kuzzb		
		27.07.2023 wotter		
TITLE: Master Extractor Tube C SI 2"x14 tpi				
PROV. METHOD: A2 000019				
DRAWING NUMBER: 1				
SHEET: 1				
ALTERATIONS: DATE: NAME: ANW: PROD. DEV: GERMANY: REPL. BY: REPL. BY:				

This drawing is the property of Dispense Systems International. The information on it is confidential and must not be copied for any other purpose without the prior written permission of DSI. Intra-Enterprise GmbH. If in doubt, please ask. Samples are required after each revision.

CONNECTIONS

EXTRACTOR TUBE ET-C SI

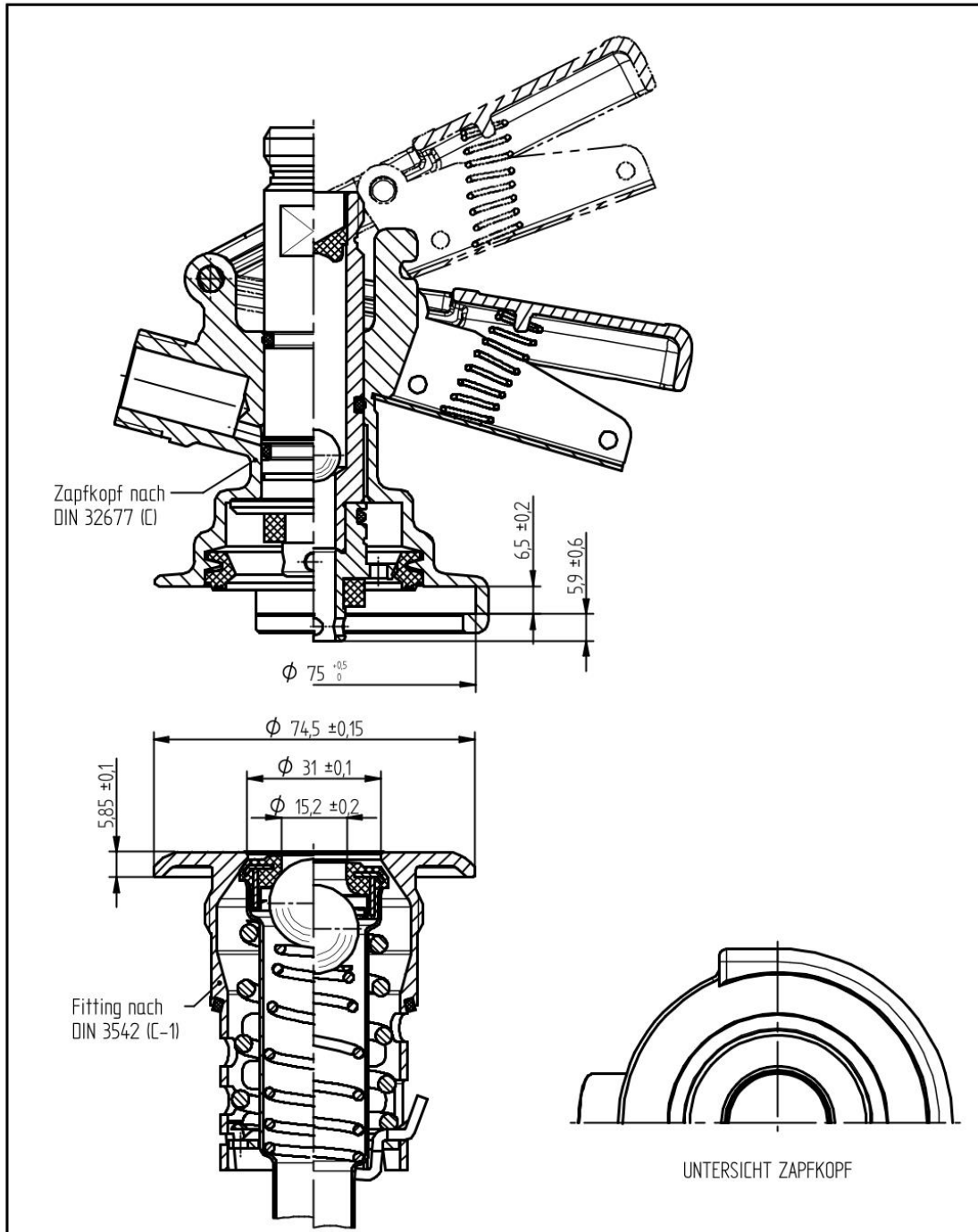
7. Connections

ET-C SI



CONNECTIONS

EXTRACTOR TUBE ET-C SI



This drawing is the property of Dispense Systems International. The information on it is confidential, and must not be copied for any other purpose without the prior written permission of DSI Getränkearmaturen GmbH. If in doubt, please ask. Samples are required after each revision.

PRODUCT		TOLERANCES DIN ISO 2768-mH		LAST CHANGE		SCALE		WEIGHT VOLUME	
		ROUGHNESS DIN EN ISO 1302		- X Δ		MATERIAL			
		EDGES DIN EN ISO 13715				TITLE			
		DESIGN		DATE		NAME			
		AM		14.06.2005		AH			
		2D		09.04.2020		kunze			
		3D		09.04.2020		kunze			
		FILE NAME:		D:\C:\p\0185574.dsm		DRAWING NAME:		185574 Combi Type Connection System.dft	
		DSI MICRO MATIC		PROJ. METHOD		FORMAT		DRAWING NUMBER	
				A4		185574		SHEET	
				REPL. -		REPL. BY -		2	
								3 SHTS.	
ALTERATIONS		DATE		NAME		ÄM		PROD. DEV.	
								GERMANY	

DSI Micro Matic GmbH

Oberster Kamp 20
59069 Hamm
Germany
Telefon: +49 (0) 23 85 772 100
Fax: +49 (0) 23 85 772 249
dsi-sales@micro-matic.com
dsi.micro-matic.com

DSI SERVICE – TEAM

SALES AND CUSTOMER SERVICE:

Iryna Matyak
Eastern Europe, UK & Ireland
Telefon: +49 (0) 23 85 772 216
E-Mail: iryna.matyak@micro-matic.com

Debora Salvador
Western Europe & North-/ South-America
Telefon: +49 (0) 23 85 772 212
E-Mail: debora.salvador@micro-matic.com

Katja Spanke
Western Europe, Australia & Asia
Telefon: +49 (0) 23 85 772 215
E-Mail: katja.spanke@micro-matic.com

SALES FIELD SERVICE:

Rafael Kurzawa
D.A.CH.
Telefon: +49 2385 772 218
Mobil: +49 162 2892386
E-Mail: rafael.kurzawa@micro-matic.com