

manual

MOUNTING – DISMOUNTING

ASSEMBLING – DISASSEMBLING
INSTRUCTION

TECHNICAL INFORMATION

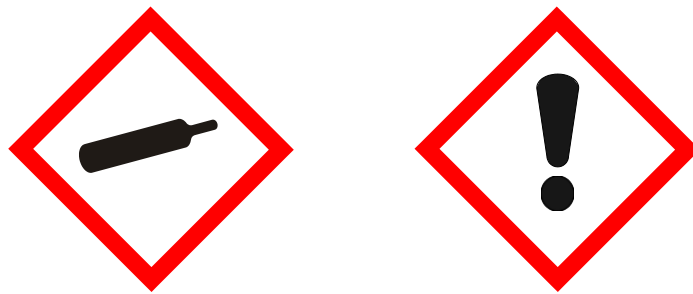
ET-USO
ET-USI



SAFETY AND QUALITY

Health and safety

Incorrect assembly/installation may damage the keg spear and poses the risk that components may occasionally come off during initial pressurization and can cause harm to product and person.



Quality

Specialised sealing systems made of high-grade materials are in daily utilisation with all our types of extractor tubes. Due to continuous improvement of our technology, we are able to equip all A-type and G-type systems with a two-year warranty.

LIST OF CONTENTS

1. Mounting Instruction
2. Dismounting Instruction
3. Disassembling Instruction
4. Assembling Instruction
5. Tool List
6. Technical Information
7. Connections

MOUNTING INSTRUCTION

EXTRACTOR TUBE ET-USO / ET-USI

1. Mounting Instruction

ET-USO



ET-USI



MOUNTING INSTRUCTION

EXTRACTOR TUBE ET-USO / ET-USI

Fig. 01



1. Moisten the extractor tube with water.

Fig. 02



2. Check the keg neck is clean. Clean the keg neck from any contaminations.

Fig. 03



3. Check the sealing ring is not damaged and is positioned correctly.

3.1 ET-USO

Pull up the sealing ring to the support ring.

MOUNTING INSTRUCTION

EXTRACTOR TUBE ET-USO / ET-USI

Fig. 04



4. Check if lock/safety is O.K. Insert the extractor tube straight.

Fig. 05



5. Push in the spear by hand. The safety latch will recess and click back after it has passed the keg neck.

Fig. 06



6. Tighten the extractor tube (rotate it clockwise) e.g. with the DSI screw-in/screw-out tool and torque-wrench.
ET-USO: The mounting torque must be $65 + 5\text{Nm}$.
ET-USI: The mounting torque must be $80 + 5\text{Nm}$.

MOUNTING INSTRUCTION

EXTRACTOR TUBE ET-USO / ET-USI

Fig. 07



7. Remove the screw-in/screw-out tool. The keg is ready for use now.

DISMOUNTING INSTRUCTION

EXTRACTOR TUBE ET-USO / ET-USI

2. Dismounting Instruction

ET-USO



ET-USI



DISMOUNTING INSTRUCTION

EXTRACTOR TUBE ET-USO / ET-USI

Fig. 8



1. Decompress the keg, e.g. by means of the DSI decompression and removal tool.

Fig. 9



2. Unscrew the extractor tube (rotate it counter-clockwise) with the DSI screw-in/screw-out tool.

Fig. 10



3. Connect the Removal Tool like a normal dispense head and press down the handle till it clicks. The safety latch will recess.

DISMOUNTING INSTRUCTION

EXTRACTOR TUBE ET-USO / ET-USI

Fig. 11



4. Take out the spear and disconnect the removal tool.

DISMOUNTING INSTRUCTION

EXTRACTOR TUBE ET-USO / ET-USI

3. Disassembling instruction

ET-USO

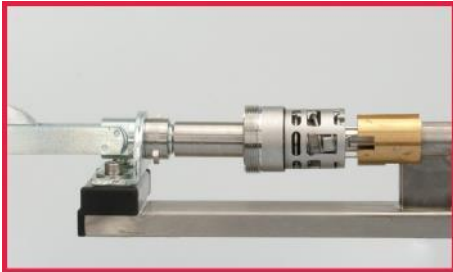


ET-USI



DISMOUNTING INSTRUCTION

EXTRACTOR TUBE ET-USO/ET-USI



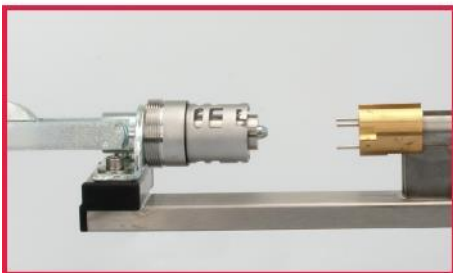
1. Put the extractor tube in the tool. Make sure that the three pins of the tool fit into the three holes in the bottom of the extractor tube.



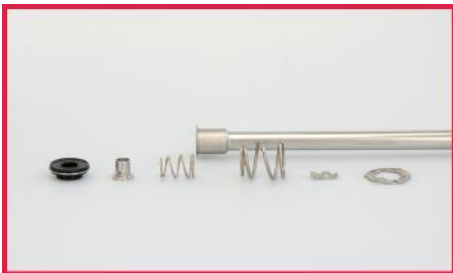
2. Pull the handle forward to compress the spring. Push the safety latch slightly inwards. Pull the body downward and turn it anti-clockwise until it is unlocked.



3. Move the body upwards and connect it to the tool by turning the body 90°.



4. Push the handle backward. Take the subassembly out. Take the body off.



5. Take off the remaining parts. The extractor tube is disassembled.

ASSEMBLING INSTRUCTION

EXTRACTOR TUBE ET-USO / ET-USI

4. Assembling instruction

ET-USO

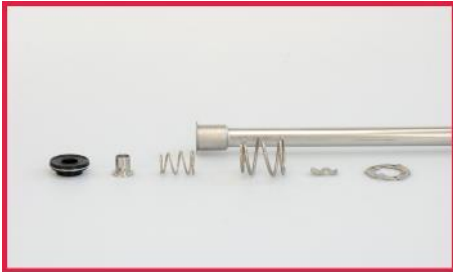


ET-USI

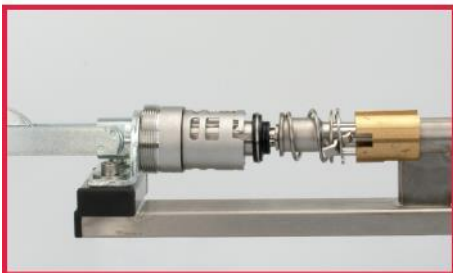


ASSEMBLING INSTRUCTION

EXTRACTOR TUBE ET-USO / ET-USI



1. Replace the sealing ring on the body and the main seal. Assemble all parts.



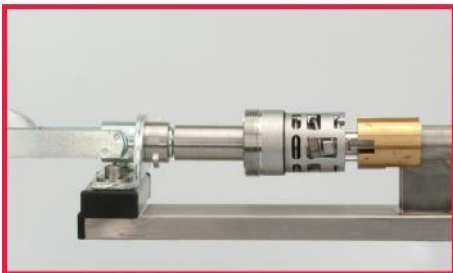
2. Connect the body to the Assembling Tool. Put the subassy in the Tool. Push the safety latch slightly inwards. Make sure the tool's three pins fit into the holes in the bottom plate.



3. Pull the handle forward to compress the spring.



4. Pull the body downwards and turn it clockwise until it is locked to the Extractor Tube Plate. Make sure that the safety latch sticks through the big opening in the body.



5. Push the handle backward in order to tension the spring and take out the extractor tube. Please check the correct positions of the seals and the safety latch.

TOOLS

EXTRACTOR TUBE ET-USO / ET-USI

5. Tool List

ET-USO



ET-USI



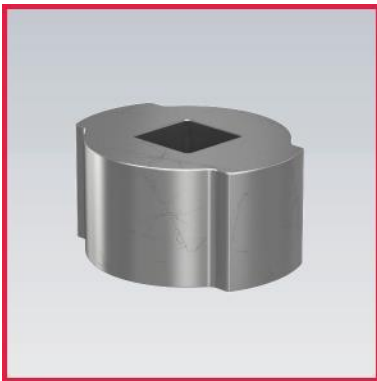
TOOLS

EXTRACTOR TUBE ET-USO / ET-USI



1. Removal- and decompression tool:

part number: 027985.1



2. Screw-in/screw-out tool:

part number: 611062



3. Assembling/Disassembling tool:

part number: 910464

TOOLS

EXTRACTOR TUBE ET-USO / ET-USI



4. Assembling tool:

part number: 611899

TECHNICAL INFORMATION

EXTRACTOR TUBE ET-USO / ET-USI

6. Technical Information

ET-USO



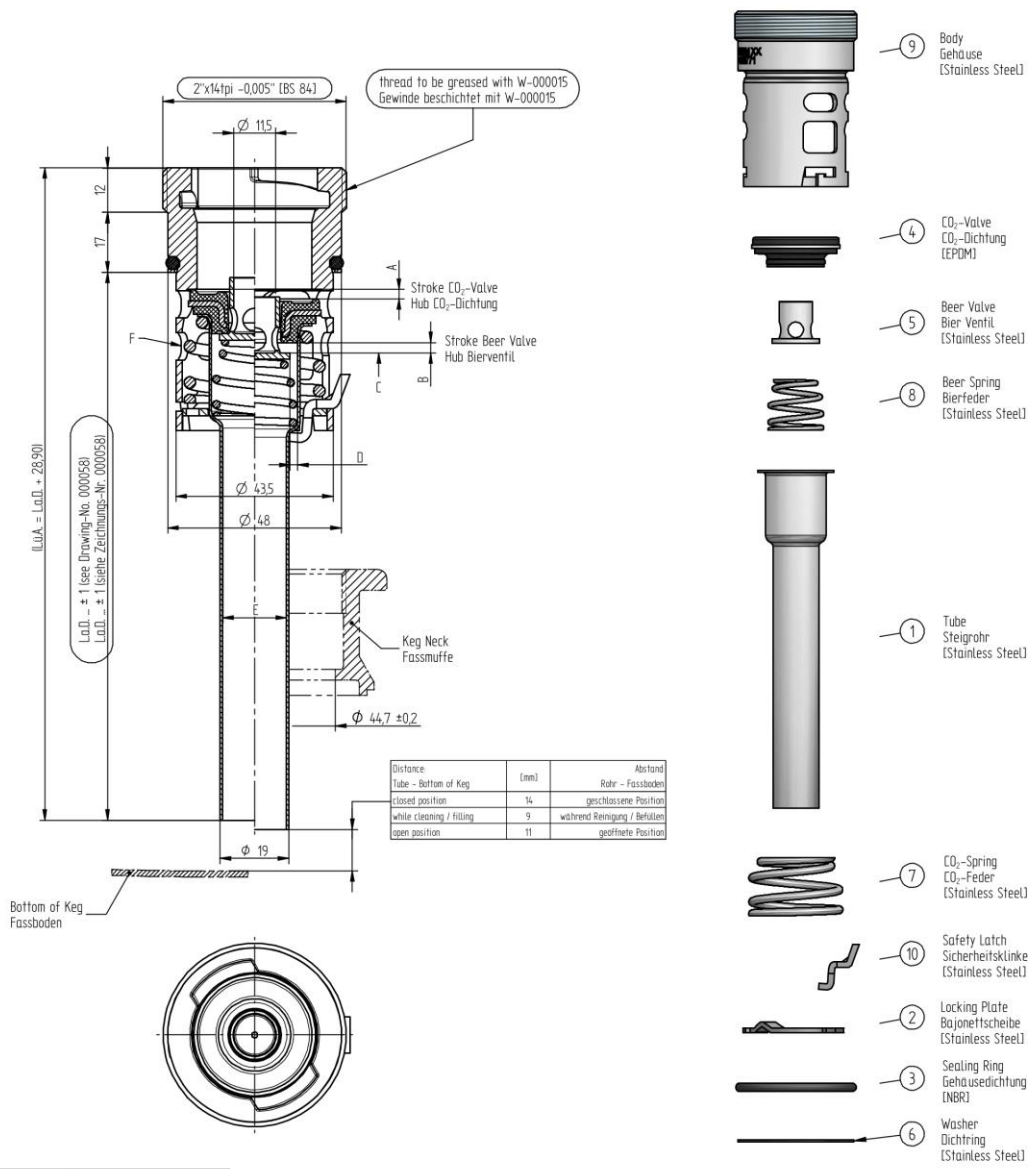
ET-USI



TECHNICAL INFORMATION

EXTRACTOR TUBE ET-USO

EN	DE	EN	open Position	white Cleaning / Filling	DE	offene Position	während Reinigung Befüllen
Product Information	Produktinformationen	Stroke and Passages			Hub und Öffnungsquerschnitte		
according to DIN 6650, DIN 3542 and FDA regulations	Produkt nach DIN 6650, DIN 3542 und FDA-Bestimmungen	I CO ₂ valve + tube part 4 + part 1 - part 9	A	3 mm	CO ₂ -Dichtung + Steigrohr Pos. 4 + Pos. 1 - Pos. 9	A	3 mm
gaslight	gasdicht	beer valve part 5 - part 4	B	4 mm	Bierventil Pos. 5 - Pos. 4	B	4 mm
For specific Length calculation keg drawing or H3-dimension is needed according to DIN 6647.	Für konkrete Längenberechnung wird die Keg-Zeichnung oder das H3-Maß nach DIN 6647 benötigt.	inside the beer valve part 5	C	64 mm ²	innerhalb des Bierventils Pos. 5	C	64 mm ²
mounting torque: 65±5 Nm	Anzugsdrehmoment: 65±5 Nm	through inner tube part 5 - part 1	D	140 mm ²	innerhalb des Steigrohrs Pos. 5 - Pos. 1	D	140 mm ²
temperature resistance short-time 135°C	Temperaturbeständigkeit kurzfristig 135°C	through inner tube Ø17,6 part 1	E	240 mm ²	innerhalb des Steigrohrs Ø17,6 Pos. 1	E	240 mm ²
for more information www.dispensegroup.com	für mehr Informationen www.dispensegroup.com	III in part 9	F	1560 mm ²	in Pos. 9	F	1560 mm ²



Pos.	Quantity	Art.-No.	Title
1	1	000055	Down Tube UEC
2	1	026367.0	Locking Plate
3	1	026708.0	O-Ring 40,87 x 3,53
4	1	027531.9	CO2 Valve
5	1	027532.1	Beer Valve
6	1	027535.2	Washer
7	1	610769	Spring, CO2, UEC
8	1	610770	Spring, Beer, UEC
9	1	610771	Body U SO 2''x14tpi
10	1	611070	Safety Latch, flat

weight calculation ± 5% / Gewichtsberechnung ± 5%

$$m [g] = (L.a.D. [mm] - 45) \cdot 0,315 \frac{g}{mm} + 340g$$

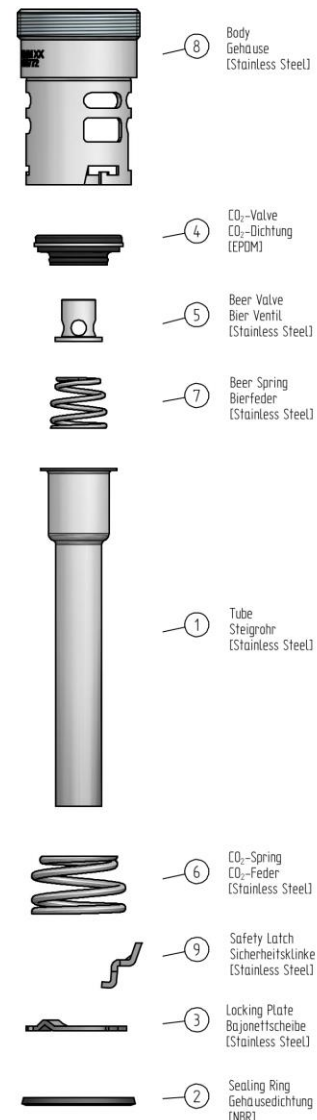
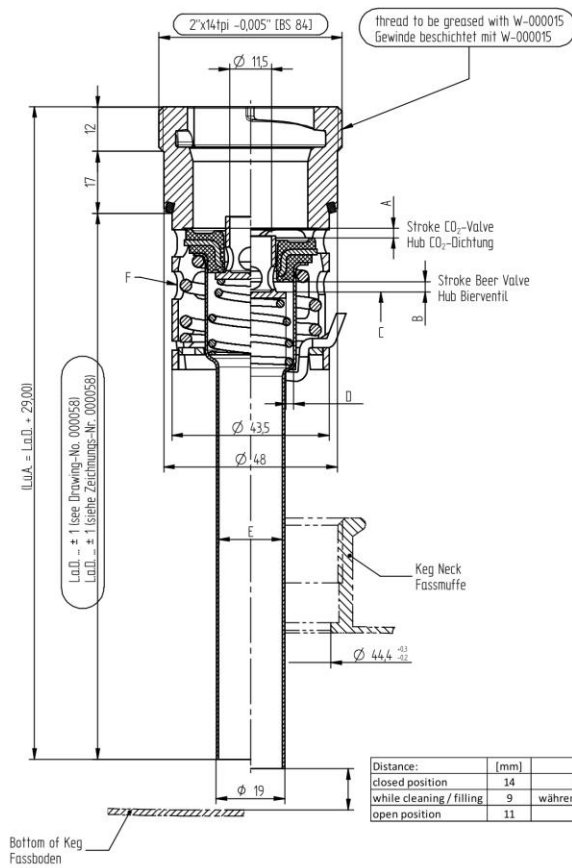
PRODUCT	TOLERANCES UNLESS SPECIFIED FINISHES DIN EN ISO 13715	LAST CHANGE - X - DATE 29.04.2015 BY 3024	SCALE: 1:21 (1:25)	WEIGHT VOLUME
MATERIAL: 304		NAME: isko	TITLE: Extractor Tube U SO 2''x14tpi	
DATE: 22.04.2020	BY: kurz26	DATE: 21.04.2020	BY: kurz26	PROJECT NUMBER: 000057
DSI MICRO Matic	A2	1	1	1

This drawing is the property of Dispense Systems International. The information on it is confidential and must not be copied for any other purpose without the prior written permission of DSI (Dispense Systems International) GmbH. If in doubt, please ask. Samples are required after each revision.

TECHNICAL INFORMATION

EXTRACTOR TUBE ET-USI

EN	DE	EN	open Position	white Cleaning / Filling	DE	offene Position	während Reinigung / Befüllen
Product Information	Produktinformationen	Stroke and Passages			Hub und Öffnungsquerschnitte		
according to DIN 6650, DIN 3542 and FDA regulations	Produkt nach DIN 6650, DIN 3542 und FDA-Bestimmungen	I CO ₂ valve + tube part 4 + part 1 - part 8	A	3mm	CO ₂ -Dichtung + Steigrohr Pos. 4 + Pos. 1 - Pos. 8	A	3 mm
gaslight	gasdicht	beer valve part 5 - part 4	B	4 mm	Bierventil Pos. 5 - Pos. 4	B	4 mm
For specific Length calculation keg drawing or H3-dimension is needed according to DIN 6647.	Für konkrete Längenberechnung wird die Keg-Zeichnung oder das H3-Maß nach DIN 6647 benötigt.	inside the beer valve part 5	C	64 mm ²	innerhalb des Bierventils Pos. 5	C	64 mm ²
mounting torque: 80±5 Nm	Anzugsdrehmoment: 80±5 Nm	through inner tube part 5 - part 1	D	140 mm ²	innerhalb des Steigrohres Pos. 5 - Pos. 1	D	140 mm ²
temperature resistance short-time 135°C	Temperaturbeständigkeit kurzfristig 135°C	through inner tube Ø17,6 part 1	E	240 mm ²	innerhalb des Steigrohres Ø17,6 Pos. 1	E	240 mm ²
for more information www.dispensegroup.com	für mehr Informationen www.dispensegroup.com	III in part 8	F	1560 mm ²	in Pos. 8	F	1560 mm ²



weight calculation ± 5% / Gewichts Berechnung ± 5%

$$m [g] = (L.a.D. [mm] - 45) * 0,315 \frac{g}{mm} + 370g$$

Pos.	Quantity	Art.-No.	Title
1	1	000055	Down Tube UEC
2	1	026363.7	Sealing Ring
3	1	026367.0	Locking Plate
4	1	027531.9	CO2 Valve
5	1	027532.1	Beer Valve
6	1	61076.9	Spring, CO2, UEC
7	1	61077.0	Spring, Beer, UEC
8	1	61077.2	Body U SI 2"x14tpi
9	1	61107.0	Safety Latch, flat

This drawing is the property of Dispense Systems International. The information on it is confidential, and must not be copied for any other purpose without the prior written permission of DSI (Dispense Systems International GmbH). If in doubt, please ask. Samples are required after each revision.

PRODUCT	TOLERANCES DIM. IN mm ROUNDEDNESS SURFACE FINISH DIM. IN µm	LAST CHANGE DATE BY	SCALE: 1:21 (1:25)	WEIGHT VOLUME
Extractor Tube U SI 2"x14tpi				
DSI MICRO MATIC				
000056				
GERMANY				

CONNECTIONS

EXTRACTOR TUBE ET-USO / ET-USI

7. Connections

ET-USO

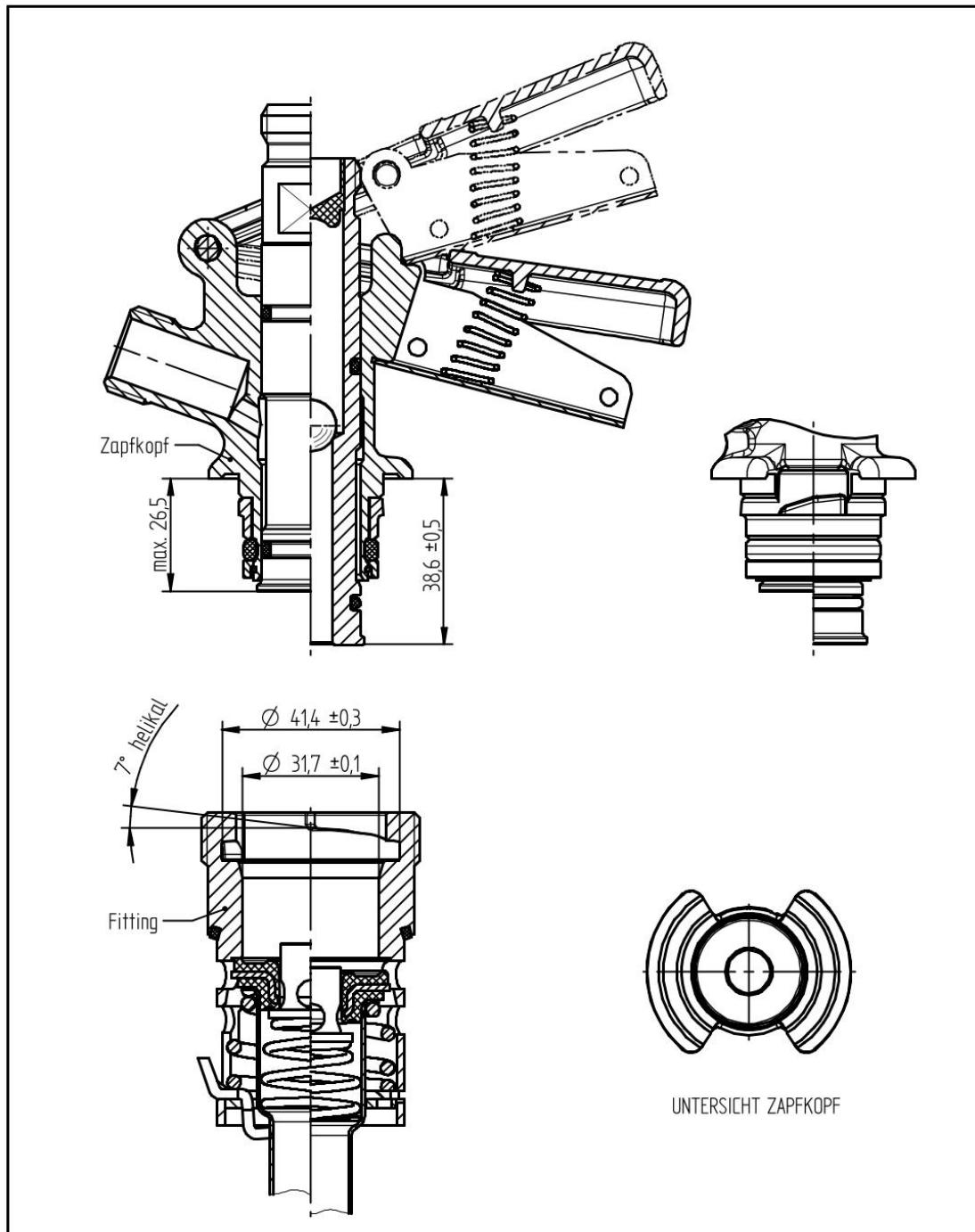


ET-USI




CONNECTIONS

EXTRACTOR TUBE ET-USO / ET-USI



This drawing is the property of Dispense Systems International. The information on it is confidential and must not be copied for any other purpose without the prior written permission of DSI Getränkearmaturen GmbH. If in doubt, please ask. Samples are required after each revision.

PRODUCT		TOLERANCES DIN ISO 2768-mH		LAST CHANGE		SCALE		WEIGHT VOLUME	
		ROUGHNESS DIN EN ISO 1302		- X Δ		MATERIAL			
		EDGES DIN EN ISO 13715				TITLE			
		DATE		NAME		U-Type Verbindungssystem SI			
		DESIGN		23.01.2014		kunze			
		AM		4427					
		2D		23.04.2020		kunze			
		3D		23.04.2020		kunze			
		LAST CHANGE				FILE NAME: DH_UFC_beta91g - für 910495.asm			
						DRAWING NAME: 910495_U-Type-Connection System SI.dft			
				PROJ. METHOD		FORMAT		DRAWING NUMBER	
				A4		910495		SHEET	
				GERMANY		REPL. -		2	
						REPL. BY -		2 SHTS.	
ALTERATIONS		DATE		NAME		ÄM			

DSI Micro Matic GmbH

Oberster Kamp 20
59069 Hamm
Germany
Telefon: +49 (0) 23 85 772 100
Fax: +49 (0) 23 85 772 249
dsi-sales@micro-matic.com
dsi.micro-matic.com

DSI SERVICE – TEAM

SALES AND CUSTOMER SERVICE:

Iryna Matyak
Eastern Europe, UK & Ireland
Telefon: +49 (0) 23 85 772 216
E-Mail: iryna.matyak@micro-matic.com

Debora Salvador
Western Europe & North-/ South-America
Telefon: +49 (0) 23 85 772 212
E-Mail: debora.salvador@micro-matic.com

Katja Spanke
Western Europe, Australia & Asia
Telefon: +49 (0) 23 85 772 215
E-Mail: katja.spanke@micro-matic.com

SALES FIELD SERVICE:

Rafael Kurzawa
D.A.CH.
Telefon: +49 2385 772 218
Mobil: +49 162 2892386
E-Mail: rafael.kurzawa@micro-matic.com