

**did**<sup>®</sup>  
**D-iDRAFT**



## The smart telemetry system

- The first smart telemetry system for pre-mix installations adaptable to any towers.
- The intelligent tap and coupler communicate to the gateway, which provides relevant and customized information to the end customer like barkeeper as well as total statistics overview to the brewery
- Digital technology to increase profit and to improve product quality
- **Patent Pending**

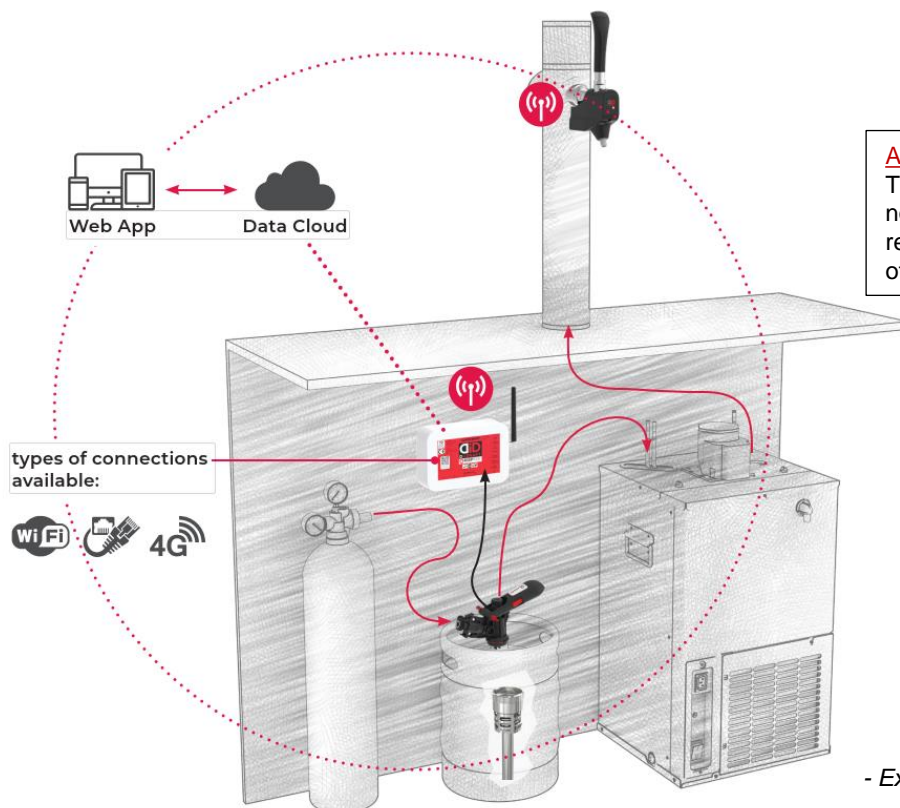
➤ Main advantages:

- Reduced logistic costs
- Regular maintenance
- Less beer waste
- Better beer quality



### Telemetry made smart

- Marketing campaigns and keg management
- Total asset management/diagnosis
- Wireless connection/communication between Tap and GW and flexible installation for couplers and devices
- Data on beer consumption and quality



- Example of installation



### TAP

- Temperature sensor
- Easy installation and maintenance
- Retrofittable on all towers
- Wireless connection to the gateway



### COUPLER

- Integrated sensor to detect beer flow
- Customized sensor to monitoring gas pressure
- Gateway cable connection
- NFC reader to get information from the tag



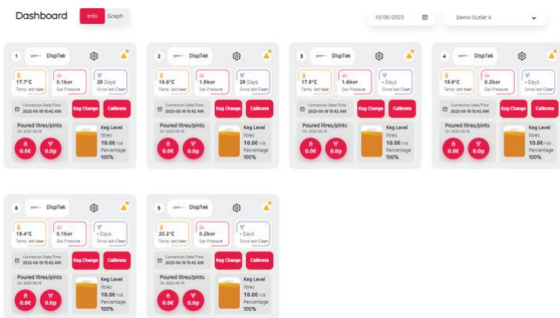
### SPEAR

- NFC Tag integrated
  - Unique ID & Production Date
  - Beer brand / Beer type / Keg capacity / Expiring date
- Re-writeable and Password secured data
- Retrofittable during refurbish



### GATEWAY

- The gateway collects all data from the connected devices
- Sends the information to the cloud via WiFi, 4G or ethernet



### WEB APP

We offer a web application to monitor and manage your dispensing system from anywhere. You can view real-time status and receive important informations for the users. Our advanced NFC technology allows you to read keg data automatically. You can generate customized reports to optimize beverage management and increase the efficiency of your keg supply.

# did<sup>®</sup>

## D-i DRAFT



[dsi.micro-matic.com](http://dsi.micro-matic.com) // [vinservice.it](http://vinservice.it)



Micro Matic

